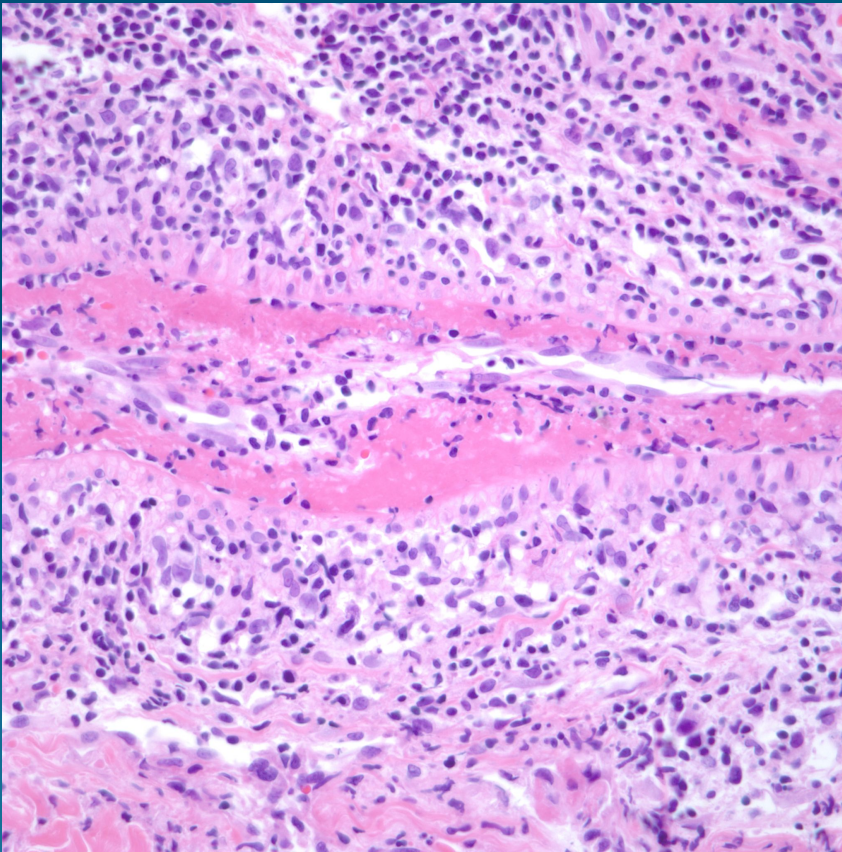


What is the best diagnosis?

- A. Leukocytoclastic vasculitis
- B. DIC
- C. Polyarteritis nodosa
- D. Lymphocytic vasculitis
- E. Cutaneous macroglobulinemia

Lymphocytic Vasculitis

Pearls



- True lymphocytic vasculitis is very rare
- Must see either fibrinoid necrosis associated with lymphocytes or medium sized vessels infiltrated by lymphocytes
- DDX: Collagen vascular disease, drugs, bacterial infections eg. Rickettsia, PLEVA